



Government of India  
Ministry of Earth Sciences  
India Meteorological Department



Press Release

Date: 07<sup>th</sup> September, 2025

Time of Issue: 1330 hours IST

**Subject: Under the influence of Depression over North Gujarat and adjoining Southwest Rajasthan, Heavy to very heavy rainfall likely over Rajasthan and Gujarat state till 08<sup>th</sup> September with possibility of Extremely heavy falls at isolated places over Rajasthan & south Gujarat, also exceptionally heavy falls ( $\geq 30$  cm) over north Gujarat region and Saurashtra & Kutch on today, the 07<sup>th</sup> September, 2025.**

**Realised weather during past 24 hours till 0830 hours IST of today, the 07<sup>th</sup> September, 2025:**

- ❖ **Heavy to very heavy rainfall with Extremely heavy rainfall ( $\geq 21$  cm)** has been recorded at isolated places over West Rajasthan and Gujarat Region.
- ❖ **Very heavy rainfall (12-20 cm)** has been recorded at isolated places over East Rajasthan, Nagaland, Manipur, Mizoram & Tripura, Konkan & Goa and Madhya Maharashtra.
- ❖ **Heavy rainfall (7-11 cm)** has been recorded at isolated places over Kashmir, Punjab, Bihar, Arunachal Pradesh, Assam & Meghalaya, Madhya Pradesh, Saurashtra & Kutch, Odisha, Telangana and Tamil Nadu.

For more details of realised weather, kindly refer [Annexure I](#).

**i. Weather Systems, Forecast and Warnings (refer to Annexure II & III):**

- ❖ The **Monsoon trough** at mean sea level runs south of its normal position.
- ❖ The **well marked low pressure area** over central parts of south Rajasthan moved nearly westwards and concentrated into a **Depression** over Southwest Rajasthan and neighbourhood at 2330 hrs IST of yesterday, the 06<sup>th</sup> September, which further moved southwestwards and lay centred at 0830 hrs IST of today, the 07<sup>th</sup> September, 2025, over North Gujarat and adjoining Southwest Rajasthan and is about 40km west of Deesa(Gujarat), 50 Km north-northeast of Radhanpur (Gujarat) and 230 km east-northeast of Bhuj (Gujarat). It is very likely to move west-southwestwards during next 2 days.
- ❖ A **trough** runs from cyclonic circulation associated with depression over North Gujarat and adjoining Southwest Rajasthan to Chhattisgarh between lower and upper tropospheric levels tilting southwards with height.
- ❖ An **upper air cyclonic circulation** lies over northwest Bay of Bengal & adjoining west central Bay of Bengal off south Odisha & north Andhra Pradesh coasts in lower & middle tropospheric levels.
- ❖ A **Western Disturbance** seen as a trough in middle & upper tropospheric westerlies with its axis at 5.8 km above mean sea level roughly along Long. 69°E to the north of Lat. 28°N.

Under the influence of these systems, the following weather is likely:

**West and Northwest India:**

- ❖ **Heavy to very heavy rainfall at a few places (7-20cm) with isolated extremely heavy falls ( $\geq 21$  cm) very likely over south Gujarat region on 07<sup>th</sup> September and exceptionally heavy falls ( $\geq 30$ cm) and isolated heavy to very heavy rainfall very likely over Gujarat state on 08<sup>th</sup> September, 2025.**
- ❖ **Heavy to very heavy rainfall at isolated places (7-20cm) over Rajasthan till 08<sup>th</sup> September with isolated extremely heavy falls ( $\geq 21$  cm) very likely over Rajasthan on today, the 07<sup>th</sup> September, 2025.**
- ❖ **Isolated heavy to very heavy rainfall very likely over Konkan on today, the 07<sup>th</sup> September 2025,**
- ❖ **Light to moderate rain/thunderstorm with isolated heavy rainfall** is very likely over Jammu Division, Himachal Pradesh, Punjab, Madhya Maharashtra on 07<sup>th</sup>; Uttarakhand on 07<sup>th</sup>, 08<sup>th</sup>, 12<sup>th</sup> & 13<sup>th</sup>; West Uttar Pradesh on 12<sup>th</sup> & 13<sup>th</sup>; East Uttar Pradesh during 11<sup>th</sup>-13<sup>th</sup>.

### **East & Central India:**

- ❖ Isolated **heavy rainfall** likely over Odisha on 07<sup>th</sup>, 08<sup>th</sup>, 10<sup>th</sup> & 13<sup>th</sup> September and **heavy to very heavy falls during 11<sup>th</sup>-12<sup>th</sup> September.**
- ❖ Light to moderate rain/thunderstorm at most/many places with isolated **heavy rainfall** likely over West Madhya Pradesh on 07<sup>th</sup>; East Madhya Pradesh on 07<sup>th</sup>, 08<sup>th</sup> & 13<sup>th</sup>; Vidarbha on 11<sup>th</sup> & 12<sup>th</sup>; Chhattisgarh on 07<sup>th</sup> & during 10<sup>th</sup>-13<sup>th</sup>; Sub-Himalayan West Bengal & Sikkim during 07<sup>th</sup>-13<sup>th</sup>; Bihar during 09<sup>th</sup>-11<sup>th</sup> September.

### **Northeast India:**

- ❖ Light/moderate rain/thunderstorm at many places with isolated **heavy rainfall** likely over Nagaland, Manipur, Mizoram & Tripura on 07<sup>th</sup>, 10<sup>th</sup> & 11<sup>th</sup>, over Arunachal Pradesh, Assam & Meghalaya on 07<sup>th</sup> & 10<sup>th</sup> September and **heavy to very heavy falls over Assam & Meghalaya, Arunachal Pradesh during 11<sup>th</sup>-13<sup>th</sup> and Nagaland, Manipur, Mizoram & Tripura on 12<sup>th</sup> & 13<sup>th</sup> September.**

### **South Peninsular India**

- ❖ Light to moderate rain/thunderstorm with isolated **heavy rainfall** likely over Tamil Nadu during 07<sup>th</sup> -10<sup>th</sup>; Kerala & Mahe on 09<sup>th</sup> & 10<sup>th</sup>; Coastal Andhra Pradesh & Yanam on 07<sup>th</sup> and during 11<sup>th</sup> – 13<sup>th</sup>; Interior Karnataka on 10<sup>th</sup> and Rayalaseema on 12<sup>th</sup> September.
- ❖ Strong surface winds (speed reaching 30-40 kmph) very likely over Coastal Andhra Pradesh & Yanam and Rayalaseema during next 5 days.

### **Fishermen warning:**

Fishermen are advised not to venture into the following from 07<sup>th</sup> to 12<sup>th</sup> September 2025 to the following Areas:

#### **Arabian Sea (AS)**

Along and off the Somalia & Oman coasts; many parts of westcentral & some parts of southwest during 07<sup>th</sup> to 12<sup>th</sup> September and few parts of northwest Arabian Sea on 08<sup>th</sup>; along and off Gujarat coasts and adjoining sea areas during 07<sup>th</sup> to 09<sup>th</sup> September; north Maharashtra coasts on 07<sup>th</sup> September and north Gujarat coasts and adjoining Sea Area till 10<sup>th</sup> early morning. Pakistan and adjoining north Arabian sea during 07<sup>th</sup> to 11<sup>th</sup> September.

#### **Bay of Bengal (BoB):**

Few parts of southwest Bay of Bengal during 07<sup>th</sup> to 09<sup>th</sup> September, along and off Tamil Nadu coasts and many parts of southwest Bay of Bengal and adjoining some parts of southeast & westcentral Bay of Bengal on 11<sup>th</sup>; over few parts of Comorin area during 07<sup>th</sup> to 10<sup>th</sup> September and over Gulf of Mannar on 11<sup>th</sup> September.

## **ii. Weather conditions and forecast over Delhi/NCR during 07<sup>th</sup> September to 10<sup>th</sup> September 2025 (Annexure IV)**

**For more details, kindly refer National Weather Bulletin:**

[https://mausam.imd.gov.in/responsive/all\\_india\\_forecast\\_bulletin.php](https://mausam.imd.gov.in/responsive/all_india_forecast_bulletin.php)

**For District wise warnings refer:** <https://mausam.imd.gov.in/responsive/districtWiseWarningGIS.php>

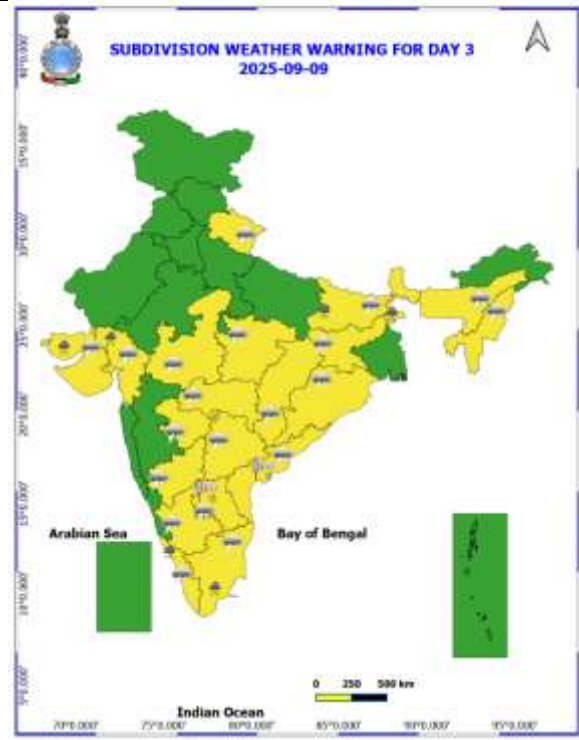
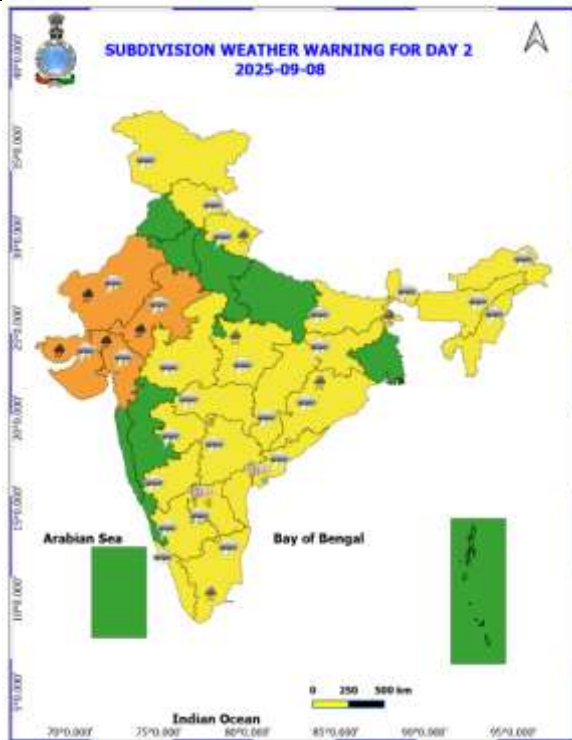
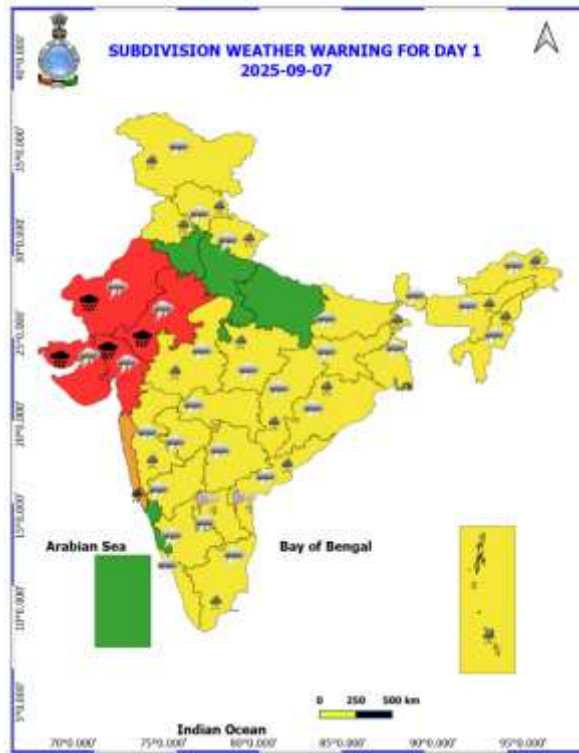
**For Fishermen warning refer** <https://rsmcnewdelhi.imd.gov.in/fishermen-warning.php>

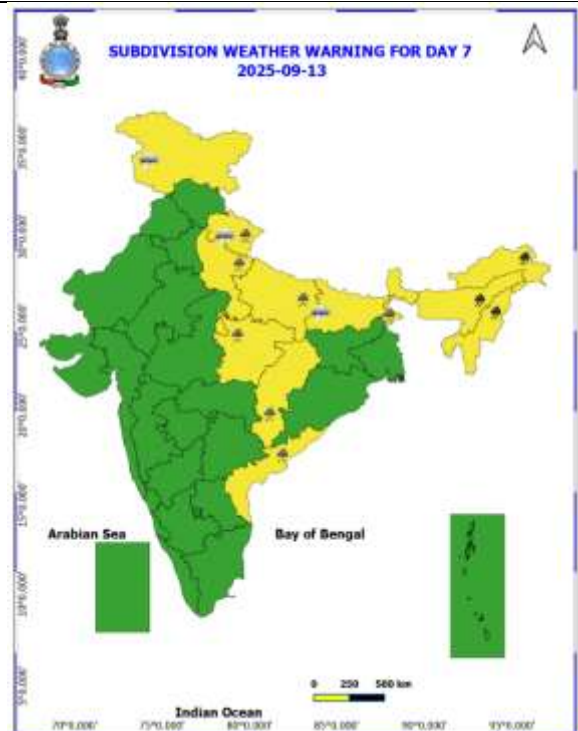
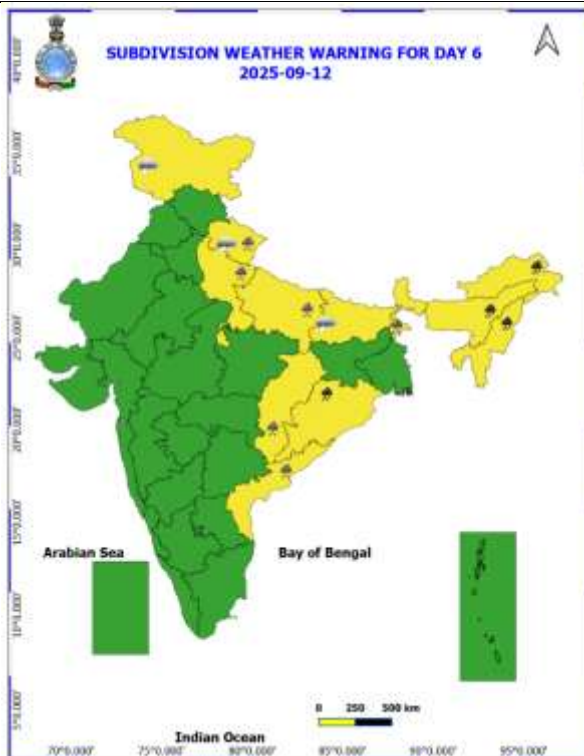
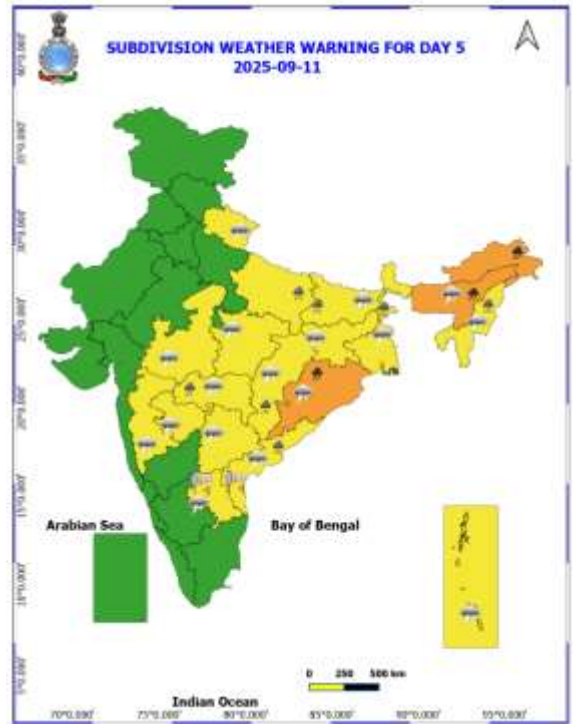
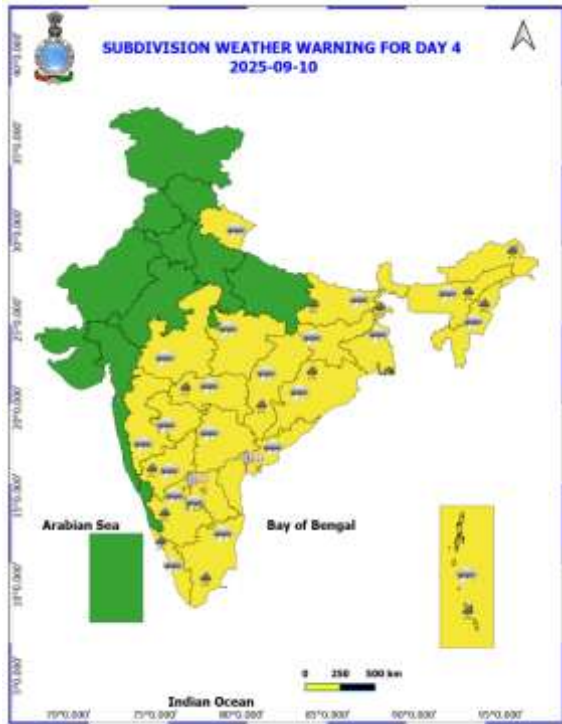
**Rainfall recorded (in cm) during past 24 hours till 0830 hours IST of today, the 07<sup>th</sup> September:**

- ❖ **Gujarat Region:** Madhbun (dist Dadara & Nagar Haveli) 24, Kaprada (dist Valsad) 23, Silvassa (dist Dadara & Nagar Haveli) 21, Nanipalson (dist Valsad) 17, Khanvel (dist Dadara & Nagar Haveli) 17, Poshina (dist Sabarkantha) 15, Dharampur (dist Valsad) 14, Umergam (dist Valsad) 14, Danta (dist Banaskantha) 12, Lakhani (dist Banaskantha) 12, Santalpur (dist Patan) 11, Wav (dist Banaskantha) 10, Prantij (dist Sabarkantha) 10, Talod (dist Sabarkantha) 10, Sanand (dist Ahmedabad) 10, Palanpur (dist Banaskantha) 10, Satlasana (dist Mehsana) 10, Kadi (dist Mehsana) 10, Sagbara (dist Narmada) 10, Dharoi Colony (dist Mehsana) 10, Dantiwada (dist Banaskantha) 9, Radhanpur (dist Patan) 9, Jhalod (dist Dahod) 9, Dhanera (dist Banaskantha) 9, Bhiloda (dist Aravalli) 9, Himatanagar (dist Sabarkantha) 9, Khedbrahma (dist Sabarkantha) 8, Pardi (dist Valsad) 8, Umerpada (dist Surat) 8, Vapi (dist Valsad) 8, Patan (dist Patan) 8, Mahesana (dist Mehsana) 8, Modasa (dist Aravalli) 8, Siddhpur (dist Patan) 8, Bayad (dist Aravalli) 8, Khergam (dist Navsari) 7, Ukai (dist Surat) 7, Patan\_aws (dist Patan) 7, Suigam (dist Banaskantha) 7, Vijaynagar (dist Sabarkantha) 7, Ghandinagar\_aws (dist Gandhinagar) 7, Idar (dist Sabarkantha) 7, Tharad (dist Banaskantha) 7, Abad City (dist Ahmedabad) 7, Becharaji (dist Mehsana) 7, Dhanpur (dist Dahod) 7, Daman (dist Daman) 7, Dahod (dist Dahod) 7, Visnagar (dist Mehsana) 7, Dolvan (dist Tapi) 7, Kheralu (dist Mehsana) 7, Balasinor (dist Mahisagar) 7;
- ❖ **West Rajasthan:** Sanchore (Jalore) 21, Jalore (Jalore) 20, Sumerpur (Pali) 11, Ahore (Jalore) 10, Bagoda (Jalore) 10, Raniwada (Jalore) 9, Sedwa (Barmer) 9, Dhorimanna (Barmer) 8, Gudamalani (Barmer) 8, Sayla (Jalore) 8, Desuri (Pali) 7, Osian (Jodhpur) 7;
- ❖ **East Rajasthan:** Gogunda (Udaipur) 15, Pindwara (Sirohi) 13, Kotda (Udaipur) 12, Mount abu (Sirohi) 11, Bhopalsagar (Chittorgarh) 9, Kanva (Dungarpur) 9, Khairwara (Udaipur) 9, Revdar (Sirohi) 8, Jhadol (Udaipur) 8, Sirohi (Sirohi) 8, Vallabh Nagar (Udaipur) 8, Shivganj (Sirohi) 8, Sajjangarh (Banswara) 7, Shergarh (Banswara) 7, Dungarpur (Dungarpur) 7, Nasirabad (Ajmer) 7, Deval (Dungarpur) 7;
- ❖ **Nagaland, Manipur, Mizoram & Tripura:** Budhjongnagar Arg (dist West Tripura) 14, Gandachara Aws (dist Dhalai) 11, Ashapara Aws (dist North Tripura) 10, Hrc Nagicherra Arg (dist West Tripura) 10, Gokulpur\_aws (dist Gomati) 9, Amarpur (dist Gomati) 9, Dharmanagar/ Panisagar (dist North Tripura) 9, Udaipur (dist Gomati) 9, Lembuchhera (dist West Tripura) 9, Arundhutinagar (dist West Tripura) 7, A D Nagar\_aws (dist West Tripura) 7, Agartala Aero (dist West Tripura) 7, Khowai (dist Khowai) 7;
- ❖ **Madhya Maharashtra:** Peth (dist Nashik) 13, Akkalkuwa (dist Nandurbar) 11, Harsul - Fmo (dist Nashik) 7, Igatpuri (dist Nashik) 7;
- ❖ **Konkan & Goa:** Talasari (dist Palghar) 12, Palghar\_agri (dist Palghar) 11, Dahanu - Imd Obsy (dist Palghar) 11, Vasai (dist Palghar) 10, Jawhar (dist Palghar) 9, Vikramgad (dist Palghar) 9, Wada (dist Palghar) 7;
- ❖ **Arunachal Pradesh:** Kangku Aws (dist Lower Siang) 11;
- ❖ **Assam & Meghalaya:** B P Ghat (dist Sribhumi) 10, Gharmura (dist Hailakandi) 8, Golaghat\_pto (dist Golaghat) 7;
- ❖ **Saurashtra & Kutch:** Bhachau (dist Kutch) 11, Morbi (dist Morbi) 10, Botad (dist Botad) 10, Bachau\_aws (dist Kutch) 9, Paddhari (dist Rajkot) 8, Malia\_miana (dist Morbi) 8, Rapar (dist Kutch) 7, Tankara (dist Morbi) 7, Jamkandorna (dist Rajkot) 7, Halvad (dist Morbi) 7;
- ❖ **Odisha:** Bhuban (dist Dhenkanal) 11, Ambadola (dist Rayagada) 10, Kotagarh (dist Kandhamal) 7;
- ❖ **Tamil Nadu:** Gingee (dist Villupuram), Tirupuvanam (dist Sivagangai) 10 each RSCL Vallam (dist Villupuram), Zone 02 Manali New Town (dist Chennai) 9 each, Ayinkudi (dist Pudukkottai), RSCL-3 Anandhapuram (dist Villupuram), Chettikulam (dist Perambalur), Vathalai Anaicut (dist Thiruchirappalli) 7 each;
- ❖ **Bihar:** Gaunaha (dist West Champaran) 9;
- ❖ **Punjab:** Ludhiana (dist Ludhiana) 8, Khawaspur Irr (dist Tarn Taran) 7, Bul Irr (dist Ludhiana) 7, Rayya Irr (dist Amritsar) 7;
- ❖ **East Madhya Pradesh:** Hanumana (dist Rewa) 8;
- ❖ **West Madhya Pradesh:** Narsingarh (dist Rajgarh) 8;
- ❖ **Telangana:** Chandrugonda (dist B. Kothagudem) 8.

Table-1								
7 Days Rainfall Forecast								
S.No.	Subdivision	7- Sep	8- Sep	9- Sep	10- Sep	11- Sep	12- Sep	13- Sep
		Day 1	Day 2	Day 3	Day 4	Day 5	Day 6	Day 7
1	ANDAMAN & NICOBAR ISLANDS	Wb	Wb	Wb	Wb	Wb	FWS	FWS
2	ARUNACHAL PRADESH	FWS	SCT	SCT	SCT	FWS	FWS	FWS
3	ASSAM & MEHGHALAYA	FWS	SCT	SCT	FWS	FWS	FWS	FWS
4	NAGALAND, MANIPUR, MIZORAM AND TRIPURA	FWS	SCT	SCT	SCT	FWS	FWS	FWS
5	SUB HIMALAYAN WEST BENGAL & SIKKIM	FWS	FWS	FWS	Wb	Wb	Wb	FWS
6	GANGETIC WEST BENGAL	ISOL	ISOL	SCT	SCT	FWS	FWS	FWS
7	ODISHA	FWS	FWS	SCT	FWS	FWS	FWS	FWS
8	JHARKHAND	ISOL	SCT	SCT	FWS	FWS	FWS	FWS
9	BIHAR	SCT	SCT	FWS	FWS	FWS	FWS	FWS
10	EAST UTTAR PRADESH	ISOL	SCT	SCT	ISOL	ISOL	ISOL	ISOL
11	WEST UTTAR PRADESH	ISOL	ISOL	ISOL	ISOL	ISOL	ISOL	ISOL
12	UTTARAKHAND	FWS	FWS	FWS	FWS	SCT	FWS	FWS
13	HARYANA, CHANDIGARH & DELHI	SCT	ISOL	SCT	ISOL	ISOL	SCT	SCT
14	PUNJAB	SCT	ISOL	SCT	ISOL	ISOL	SCT	SCT
15	HIMACHAL PRADESH	FWS	FWS	SCT	SCT	SCT	SCT	SCT
16	JAMMU AND KASHMIR AND LADAKH	FWS	FWS	SCT	DRY	ISOL	ISOL	SCT
17	WEST RAJASTHAN	FWS	SCT	ISOL	ISOL	ISOL	DRY	DRY
18	EAST RAJASTHAN	FWS	ISOL	ISOL	ISOL	ISOL	ISOL	ISOL
19	WEST MADHYA PRADESH	FWS	SCT	SCT	SCT	SCT	SCT	FWS
20	EAST MADHYA PRADESH	SCT	SCT	FWS	FWS	FWS	Wb	Wb
21	GUJRAT REGION	Wb	Wb	FWS	FWS	SCT	SCT	SCT
22	SAURASHTRA & KUTCH	Wb	Wb	FWS	SCT	SCT	SCT	SCT
23	KONKAN & GOA	FWS	FWS	SCT	SCT	SCT	SCT	SCT
24	MADHYA MAHARASHTRA	SCT	SCT	SCT	SCT	SCT	FWS	FWS
25	MARATHWADA	ISOL	ISOL	ISOL	SCT	SCT	SCT	SCT
26	VIDARBHA	FWS	SCT	SCT	SCT	FWS	Wb	Wb
27	CHHATTISGARH	FWS	FWS	FWS	Wb	Wb	Wb	FWS
28	COASTAL ANDHRA PRADESH	ISOL	ISOL	SCT	SCT	FWS	FWS	FWS
29	TELANGANA	ISOL	ISOL	ISOL	SCT	SCT	SCT	SCT
30	RAYALASEEMA	ISOL	ISOL	ISOL	SCT	SCT	FWS	FWS
31	TAMILNADU & PUDUCHERRY	SCT	SCT	SCT	SCT	ISOL	ISOL	ISOL
32	COSTAL KARNATAKA	SCT	SCT	SCT	SCT	SCT	SCT	SCT
33	NORTH INTERIOR KARNATAKA	ISOL	ISOL	ISOL	SCT	SCT	SCT	SCT
34	SOUTH INTERIOR KARNATAKA	SCT	SCT	SCT	SCT	SCT	SCT	SCT
35	KERALA AND MAHE	SCT	SCT	FWS	FWS	SCT	SCT	SCT
36	LAKSHADWEEP	SCT	SCT	SCT	SCT	SCT	SCT	SCT

- As the lead period increases forecast accuracy decrease.





- Action may be taken based on ORANGE AND REDCOLOUR warnings.
- Vulnerable regions likely urban and hilly areas action may be initiated for heavy rainfall warning.
- As the lead period increases forecast accuracy decreases.

Detailed districtwise Multi Hazard weather warning for next five days available at <https://mausam.imd.gov.in/responsive/districtWiseWarningGIS.php>

**Weather forecast over Delhi/NCR during 07<sup>th</sup> to 10<sup>th</sup> September 2025****Past Weather:**

There has been no large change in the minimum temperature and rise in maximum temperature up to 1°C over Delhi/NCR during the past 24 hours. The maximum and minimum temperatures over Delhi were around 31 to 34°C and 24 to 26°C respectively. The minimum temperature was near normal and maximum temperature was near normal. Partly cloudy sky conditions with predominant surface wind from the east/southeast direction with wind speeds up to 18 kmph prevailed during the past 24 hours. Very light to light rain/thundershowers at many places with moderate rain at isolated places has been recorded in Delhi. Partly cloudy sky conditions with a wind speed of less than 16 kmph from the southeast direction prevailed over the region in the forenoon today.

**Weather Forecast:**

**07.09.2025:** Partly cloudy sky. Possibility of one or two spells of very light to light rain/thundershowers very likely at few places with moderate rain at isolated places during afternoon/evening. The maximum temperatures over Delhi are likely to be in the range of 34 to 36°C. The maximum temperature will be above normal up to 1 - 2°C. The predominant surface wind will likely be from the southeast direction with a wind speed of up to 20-25 kmph during the afternoon hours. The wind speed will decrease becoming less than 20 kmph from the southwest direction during the evening and night.

**08.09.2025:** Partly cloudy sky. Possibility of one or two spells of very light to light rain/thundershowers very likely at few places. The maximum and minimum temperatures over Delhi are likely to be in the range of 34 to 36°C and 23 to 25°C respectively. The minimum temperature will be below normal up to 1 to 2°C and the maximum temperature will be above normal up to 1 - 2°C. The predominant surface wind will likely to be from the southwest direction with a wind speed of up to 10 - 15 kmph during morning hours. The wind speed will gradually increase becoming less than 18 kmph from the southwest direction in the afternoon. The wind speed will decrease becoming less than 12 kmph from the west direction during the evening and night.

**09.09.2025:** Partly cloudy sky. Possibility of one or two spells of very light rain/thundershowers very likely at isolated places. The maximum and minimum temperatures over Delhi are likely to be in the range of 34 to 36°C and 24 to 26°C respectively. The minimum temperature will be near normal and the maximum temperature will be above normal up to 1 - 3°C. The predominant surface wind will likely to be from the southwest direction with a wind speed of up to 10-15 kmph during morning hours. The wind speed will gradually increase becoming less than 18 kmph from the northwest direction in the afternoon. The wind speed will decrease becoming less than 10 kmph from the northwest direction during the evening and night.

**10.09.2025:** Partly cloudy sky. The maximum and minimum temperatures over Delhi are likely to be in the range of 34 to 36°C and 24 to 26°C respectively. The minimum temperature will be near normal and the maximum temperature will be above normal up to 1 to 3°C. The predominant surface wind will likely be from the northwest direction with a wind speed of less than 20 kmph during the morning hours. The wind speed will gradually increase becoming less than 25 kmph from the northwest direction in the afternoon. The wind speed will decrease becoming less than 15 kmph from the west direction during the evening and night.

### Impact & Action Suggested due to

- ❖ **Heavy to very heavy rainfall at a few places (7-20cm) with isolated extremely heavy falls ( $\geq 21$  cm)** over south Gujarat region on 07<sup>th</sup> September and exceptionally heavy falls ( $\geq 30$ cm) and isolated heavy to very heavy rainfall very likely over Gujarat state on 08<sup>th</sup> September, 2025.
- ❖ **Heavy to very heavy rainfall at isolated places (7-20cm)** over Rajasthan till 08<sup>th</sup> September with **isolated extremely heavy falls ( $\geq 21$  cm)** over Rajasthan on today, the 07<sup>th</sup> September, 2025.
- ❖ **Very heavy rainfall** over Konkan on 07<sup>th</sup>; Odisha on 11<sup>th</sup> & 12<sup>th</sup>; Assam & Meghalaya, Arunachal Pradesh during 11<sup>th</sup>-13<sup>th</sup> and Nagaland, Manipur, Mizoram & Tripura on 12<sup>th</sup> & 13<sup>th</sup> September.

### Impact Expected

- Localized Flooding of roads, water logging in low lying areas and closure of underpasses mainly in urban areas of the above region.
- Occasional reduction in visibility due to heavy rainfall.
- Disruption of traffic in major cities due to water logging in roads leading to increased travel time.
- Minor damage to kutcha roads.
- Possibilities of damage to vulnerable structure.
- Localized Landslides/Mudslides/landslips/mudslips/landsinks/mudsinks.
- Damage to horticulture and standing crops in some areas due to inundation.
- It may lead to riverine flooding in some river catchments (for riverine flooding please visit Web page of CWC)

### Action Suggested

- Check for traffic congestion on your route before leaving for your destination.
- Follow any traffic advisories that are issued in this regard.
- Avoid going to areas that face the water logging problems often.
- Avoid staying in vulnerable structure.

### Agromet advisories for likely impact of Heavy / Heavy to Very Heavy / Extremely Heavy Rainfall

- In Gujarat, drain out excess rain water from fields of rice, sugarcane, okra, tuber crops and vegetables in South Gujarat Heavy Rainfall Zone; castor, cotton, groundnut, pearl millet, sesame, maize and vegetables in North Gujarat Zone; rice, pearl millet, pigeon pea, cotton, soybean, maize and castor in Middle Gujarat Zone; rice, cotton, pigeon pea and fruit orchards (banana and mango) in South Gujarat Zone; groundnut, cotton and soybean in North Sourashtra Zone; *kharif* groundnut, cotton, soybean, black gram and sesame in North West Zone; cotton, green gram, black gram, pigeon pea, pearl millet and vegetables in Bhal and Coastal Zone and groundnut, cotton, soybean, black gram, green gram, sesame and pigeon pea in South Sourashtra Zone.
- In Rajasthan, make proper drainage arrangements in fields of green gram, cluster bean, moth bean and castor in Arid Western Plain Zone; cotton, maize, soybean, groundnut and pulses in Sub Humid Southern Plain and Aravali Hill Zone and soybean, cotton, maize and vegetables in Southern Humid Plain Zone.
- In Maharashtra, make arrangements to drain out excess water from fields of rice, finger millet, turmeric, groundnut, vegetables and fruit orchards in Konkan and rice, soybean, cotton, vegetable fields and fruit orchards in *ghat* areas of Madhya Maharashtra.
- In Punjab, make arrangements to drain out excess water from fields of cotton, maize and vegetables in Central Plain Zone.

### Livestock / Fishery

- Keep the animals inside the shed during heavy rainfall and provide them balanced feed.
- Store feed and fodder in a safe place to prevent spoilage.
- Construct an outlet with proper netting around the ponds to drain out excess water, thereby preventing fish from escaping in case of overflow.

### Agromet advisories for likely impact of Thunderstorm / Gusty Winds / Squally Winds

- Provide mechanical support to horticultural crops and staking or support to vegetables and young fruit plants / fruit-bearing plants to avoid lodging due to strong winds.



## Flash flood guidance:

24 hours Outlook for the Flash Flood Risk (FFR) till 1130 IST of 08-09-2025 :

Moderate to High flash flood risk likely over few watersheds & neighbourhoods of following Met Sub-divisions during next 24 hours.

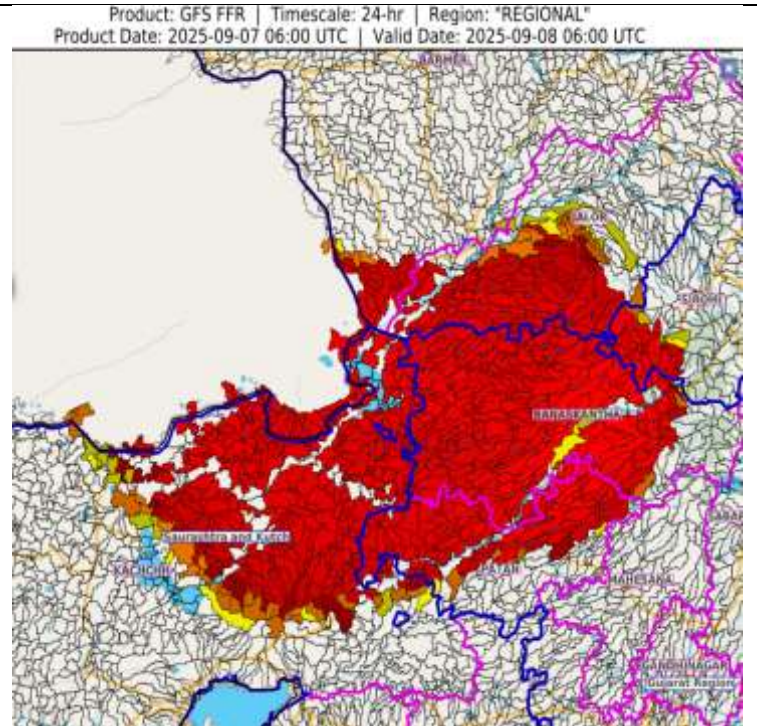
Gujarat Region - Banaskantha and Patan districts.

Saurashtra & Kutch - Kachchh district.

West Rajasthan - Barmer and Jalor districts.

Adjoining East Rajasthan - Sirohi district.

Surface runoff/ Inundation may occur at some fully saturated soils & low-lying areas over Area of Concern (AoC) as shown in map due to expected rainfall occurrence in next 24 hours.

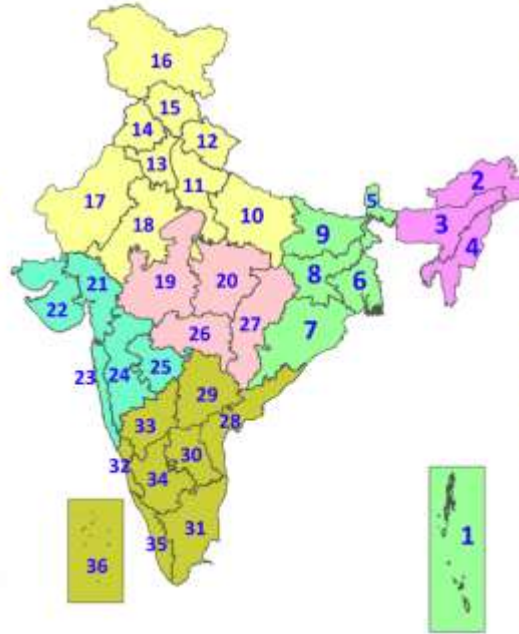


### Legends & abbreviations:

- ❖ **Heavy Rain:**64.5-115.5mm; **Very Heavy Rain:**115.6-204.4mm; **Extremely Heavy Rain:** >204.4mm.
- ❖ **Obsy:** Observatory; Automatic Weather Station; **ARG:** Automatic Rain Gauge; **dist:** District; **NH:** National Highway; **KVK:** Krishi Vigyan Kendra; **DVC:** Damodar Valley Corporation; **PTO:** Part Time Office, **Aero:** Aerodrome, **IAF:** Indian Air Force.
- ❖ **Region wise classification of meteorological Sub-Divisions:**
  - **Northwest India:** Western Himalayan Region (Jammu-Kashmir-Ladakh-Gilgit-Baltistan-Muzaffarabad, Himachal Pradesh and Uttarakhand); Punjab, Haryana-Chandigarh-Delhi; West Uttar Pradesh, East Uttar Pradesh, West Rajasthan and East Rajasthan.
  - **Central India:** West Madhya Pradesh, East Madhya Pradesh, Vidarbha and Chhattisgarh.
  - **East India:** Bihar, Jharkhand, Sub-Himalayan West Bengal & Sikkim; Gangetic West Bengal, Odisha and Andaman & Nicobar Islands.
  - **Northeast India:** Arunachal Pradesh, Assam & Meghalaya and Nagaland, Manipur, Mizoram & Tripura.
  - **West India:** Gujarat Region, Saurashtra & Kutch, Konkan & Goa, Madhya Maharashtra and Marathawada.
  - **South India:** Coastal Andhra Pradesh & Yanam, Telangana, Rayalaseema, Coastal Karnataka, North Interior Karnataka, South Interior Karnataka, Kerala & Mahe, Tamil Nadu, Puducherry & Karaikal and Lakshadweep.

## LEGENDS

1. अंडमान और निकोबार द्वीपसमूह
2. अरुणाचल प्रदेश
3. असम और मेघालय
4. नागालैंड, मणिपुर, मिजोरम और त्रिपुरा
5. उप-हिमालयी पश्चिम बंगाल और सिक्किम
6. गंगीय पश्चिम बंगाल
7. ओडिशा
8. झारखंड
9. बिहार
10. पूर्वी उत्तर प्रदेश
11. पश्चिम उत्तर प्रदेश
12. उत्तराखंड
13. हरियाणा, चंडीगढ़ और दिल्ली
14. पंजाब
15. हिमाचल प्रदेश
16. जम्मू और कश्मीर और लद्दाख
17. पश्चिम राजस्थान
18. पूर्वी राजस्थान
19. पश्चिम मध्य प्रदेश
20. पूर्वी मध्य प्रदेश
21. गुजरात
22. सौराष्ट्र
23. कोंकण और गोवा
24. मध्य महाराष्ट्र
25. मराठवाड़ा
26. विदर्भ
27. छत्तीसगढ़
28. तटीय आंध्र प्रदेश और यनम
29. तेलंगाना
30. रायलसीमा
31. तमिलनाडु, पुडुचेरी और कराईकल
32. तटीय कर्नाटक
33. आंतरिक उत्तरी कर्नाटक
34. आंतरिक दक्षिणी कर्नाटक
35. केरल और माहे
36. लक्षद्वीप



1. Andaman & Nicobar Islands
2. Arunachal Pradesh
3. Assam & Meghalaya
4. Nagaland, Manipur, Mizoram & Tripura
5. Sub-Himalayan West Bengal & Sikkim
6. Gangetic West Bengal
7. Odisha
8. Jharkhand
9. Bihar
10. East Uttar Pradesh
11. West Uttar Pradesh
12. Uttarakhand
13. Haryana, Chandigarh & Delhi
14. Punjab
15. Himachal Pradesh
16. Jammu & Kashmir and Ladakh
17. West Rajasthan
18. East Rajasthan
19. West Madhya Pradesh
20. East Madhya Pradesh
21. Gujarat
22. Saurashtra
23. Konkan & Goa
24. Madhya Maharashtra
25. Marathwada
26. Vidarbha
27. Chhattisgarh
28. Coastal Andhra Pradesh & Yanam
29. Telangana
30. Rayalaseema
31. Tamilnadu, Puducherry & Karaikal
32. Coastal Karnataka
33. North Interior Karnataka
34. South Interior Karnataka
35. Kerala & Mahe
36. Lakshadweep

## SPATIAL DISTRIBUTION (% of Stations reporting)

% Stations	Category	% Stations	Category
76-100	Widespread (WS/Most Places)	26-50	Scattered (SCT/A Few Places)
51-75	Fairly Widespread (FWS/Many Places)	1-25	Isolated (ISOL)

- |                      |                      |              |
|----------------------|----------------------|--------------|
| Fog                  | Heavy Snow           | Cold Wave    |
| Heavy Rain           | Dust Storm           | Cold Day     |
| Very Heavy Rain      | Heat Wave            | Ground Frost |
| Extremely Heavy Rain | Warm Night           |              |
| Thunder & Lightning  | Hot Day              |              |
| Hailstorm            | Hot & Humid          |              |
| Dust Raising Winds   | Strong Surface Winds |              |

### COLOUR CODED WARNING

No Warning (No Action)
Watch (Be Aware)
Alert (Be Prepared To Take Action)
Warning (Take Action)

### Probabilistic Forecast

Terms	Probability of Occurrence (%)
Unlikely	< 25
Likely	25 - 50
Very Likely	50 - 75
Most Likely	> 75

\* Red colour warning does not mean "Red Alert", Red colour warning means "Take Action".  
Forecast and Warning for any day is valid from 0830 hours IST of day till 0830 hours IST of next day.  
For more details, kindly visit <https://mausam.imd.gov.in> or contact: 011-2434-4599  
(Service to the Nation since 1875)

### DEFINITION/CRITERIA

<b>Rain/ Snow *</b>	<p><b>Heavy:</b> 64.5 to 115.5 mm/cm *</p> <p><b>Very Heavy:</b> 115.6 to 204.4 mm/cm*</p> <p><b>Extremely Heavy:</b> &gt; 204.4 mm/cm *</p>
<b>Heat Wave</b>	<p>When maximum temperature of a station reaches <math>\geq 40^{\circ}\text{C}</math> for plains and <math>\geq 30^{\circ}\text{C}</math> for hilly regions</p> <p><b>(a) Based on Departure from normal</b></p> <p><b>Heat Wave:</b> Maximum Temperature Departure from normal <math>4.5^{\circ}\text{C}</math> to <math>6.4^{\circ}\text{C}</math>.</p> <p><b>Severe Heat Wave:</b> Maximum Temperature Departure from normal <math>\geq 6.5^{\circ}\text{C}</math></p> <p><b>(b). Based on Actual maximum temperature</b></p> <p><b>Heat Wave:</b> When actual maximum temperature <math>\geq 45^{\circ}\text{C}</math>.</p> <p><b>Severe Heat Wave:</b> When actual maximum temperature <math>\geq 47^{\circ}\text{C}</math></p> <p><b>( c). Criteria for heat wave for coastal stations</b></p> <p>When maximum temperature departure is <math>&gt;4.5^{\circ}\text{C}</math> from normal. Heat Wave may be described provided maximum temperature <math>\geq 37^{\circ}\text{C}</math>.</p>
<b>Warm Night</b>	<p><b>When maximum temperature remains <math>40^{\circ}\text{C}</math></b></p> <p><b>Warm Night:</b> When minimum temperature departure <math>4.5^{\circ}\text{C}</math> to <math>6.4^{\circ}\text{C}</math>.</p> <p><b>Severe Warm Night:</b> When minimum temperature departure <math>&gt;6.4^{\circ}\text{C}</math>.</p>
<b>Cold Wave</b>	<p>When minimum temperature of a station <math>\leq 10^{\circ}\text{C}</math> for plains and <math>\leq 0^{\circ}\text{C}</math> for hilly regions.</p> <p><b>(a). Based on departure</b></p> <p><b>Cold Wave:</b> Minimum Temperature Departure from normal <math>-4.5^{\circ}\text{C}</math> to <math>-6.4^{\circ}\text{C}</math>.</p> <p><b>Severe Cold Wave:</b> Minimum Temperature Departure from normal <math>\leq -6.5^{\circ}\text{C}</math></p> <p><b>(b) Based on actual Minimum Temperature (for Plains only)</b></p> <p><b>Cold Wave :</b> When Minimum Temperature is <math>\leq 4.0^{\circ}\text{C}</math></p> <p><b>Severe Cold Wave:</b> When Minimum Temperature is <math>\leq 2.0^{\circ}\text{C}</math></p> <p><b>( c) For Coastal Stations</b></p> <p>When Minimum Temperature departure is <math>\leq -4.5^{\circ}\text{C}</math> &amp; actual Minimum Temperature is <math>\leq 15^{\circ}\text{C}</math></p>
<b>Cold Day</b>	<p>When minimum temperature of a station <math>\leq 10^{\circ}\text{C}</math> for plains and <math>\leq 0^{\circ}\text{C}</math> for hilly regions</p> <p><b>Based on departure</b></p> <p><b>Cold Day:</b> Maximum Temperature Departure from normal <math>-4.5^{\circ}\text{C}</math> to <math>-6.4^{\circ}\text{C}</math>.</p> <p><b>Severe Cold Day:</b> Maximum Temperature Departure from normal <math>\leq -6.5^{\circ}\text{C}</math></p>
<b>Fog</b>	<p><b>Phenomenon of small droplets suspended in air and the horizontal visibility <math>&lt; 1\text{km}</math></b></p> <p><b>Moderate Fog:</b> When the visibility between 500-200 metres</p> <p><b>Dense Fog:</b> when the visibility between 50- 200 metres</p> <p><b>Very Dense Fog:</b> when the visibility <math>&lt; 50</math> metres</p>
<b>Thunderstorm</b>	<p>Sudden electrical discharges manifested by a flash of light (Lightning) and a sharp rumbling sound (thunder)</p>
<b>Dust/Sand Storm</b>	<p>An ensemble of particles of dust or sand energetically lifted to great heights by a strong and turbulent wind.</p>
<b>Frost</b>	<p><b>Ice deposits on ground</b></p> <p>Air temperature <math>\leq 4^{\circ}\text{C}</math> ( over Plains)</p>
<b>Squall</b>	<p><b>A strong wind that rises suddenly, lasts for atleast 1 minute.</b></p> <p><b>Moderate:</b> Wind speed 52-61 kmph</p> <p><b>Severe:</b> Wind speed 62-67 kmph</p> <p><b>Very Severe:</b> Wind speed <math>&gt;67</math> kmph</p>
<b>Sea State</b>	<p><b>Effect of various waves in the sea over specific area</b></p> <p><b>Rough to very rough:</b> Wind speed 41-62 kmph (22-33 knots) &amp; Wave height 2.5-6 metre</p> <p><b>High to very high:</b> Wind speed 63-117 kmph ( 34-63 knots) &amp; Wave height 6-14 metre</p> <p><b>Phenomenal:</b> Wind speed <math>&gt;117</math> kmph (<math>&gt;63</math> knots) &amp; Wave height <math>&gt;14</math> metre</p>
<b>Cyclone</b>	<p><b>Cyclonic Storm:</b> Wind speed 62-67 kmph (34-47 knots)</p> <p><b>Severe Cyclonic Storm:</b> Wind speed 88-117 kmph (48-63 knots)</p> <p><b>Very Severe Cyclonic Storm:</b> Wind speed 118-165 kmph (64 - 89 knots)</p> <p><b>Extremely Severe Cyclonic Storm:</b> Wind speed 166-220 kmph (90 -119 knots)</p> <p><b>Super Cyclone Storm:</b> Wind speed <math>&gt;220</math> kmph (<math>&gt;119</math> knots)</p>

\* Red colour warning does not mean "Red Alert", Red colour warning means "Take Action".  
Forecast and Warning for any day is valid from 0830 hours IST of day till 0830 hours IST of next day.  
For more details, kindly visit <https://mausam.imd.gov.in> or contact: 011-2434-4599  
(Service to the Nation since 1875)

**Hot and Humid:** When maximum temperatures remain  $3^{\circ}\text{C}$  above normal along with the above normal relative humidity.